

Operating Instructions
Wine storage refrigerator

Grand Cru

Many thanks for your trust.

Congratulations on your purchase of this wine storage refrigerator. In buying this product, which is distinguished by its perfect user-friendliness, impeccable reliability and high quality, you have chosen a top class appliance. We wish you a lot of pleasure with your new wine storage refrigerator – and a lot of enjoyment from your wines.

The fewer the grapes produced in an area, the better the wine.

Poor, well-drained soils are best for good wines. The properties of the soil influence the vitality of the vine, which in turn affects the quality of the grape. Climate is another factor that is important for wine. Because light and air humidity are important for the development of the flavour of the wine.

The right environment for your wines.

A vine is an extremely sensitive plant. From the time it is planted to its maturing period and the time the grapes are harvested and the wine is made, it is dependent on three factors: light, air humidity and ambient temperature. This sensitivity continues even once the wine is bottled. To allow the flavour of the wine to fully develop or to preserve the excellent aroma, the wine has to be stored perfectly – and your wine storage refrigerator offers the best conditions for this.

Setting up

- The temperature in the place where your wine storage refrigerator is located must be between 10 and 32°C. Avoid locating it in direct sunlight or near heat sources such as an oven or a radiator.
- The floor should be level and even. You can compensate for an uneven floor by adjusting the SW 22 adjustable feet.

The appliance can be placed with its back flush to the wall.

- Please make sure the appliance is properly ventilated.
- Standard EN 378 specifies that the room in which you install your appliance must have a volume of 1 m³ per 8 g of R 600a refrigerant used in the appliance, so as to avoid the formation of inflammable gas/air mixtures in the room where the appliance is located in the event of a leak in the refrigerant circuit. The quantity of refrigerant used in your appliance is indicated on the type plate on the inside of the appliance.

Dimensions

Series 29: height: 1250 mm, width: 659 mm, depth: 683 mm

Series 41: height: 1644 mm, width: 659 mm, depth: 683 mm

Series 46: height: 1841 mm, width: 659 mm, depth: 683 mm

Connecting to the mains

Power supply (AC) and voltage at the operating point must comply with the details on the type plate. The type plate is located on the top left-hand side on the inside of the appliance. The socket must be fused with a 10 A fuse or higher.

Please allow the appliance to stand for approximately 1/2 – 1 hour before you connect it to a properly earthed socket.

The socket should be easily accessible and not directly behind the appliance.

Interior light

The interior light is fitted on the inside at the top. It can be switched on and off by pressing the switch **S** on the underside of the tabletop.

To change the tube:

- Pull out the mains plug or remove/ unscrew the fuse.
- Lever out the cover panel on the lamp housing at the front and remove downwards.
- Turn the tube 90° and pull out downwards. Insert a new tube and turn 90°.
- Replace the cover panel by inserting at the back and clicking into place at the front.



If the interior light still does not work after you have changed the bulb, please consult your nearest customer service point.

Switching the appliance on and off

You are recommended to clean the appliance before switching it on for the first time (see "Cleaning"). The appliance has been tested and is supplied set for normal operation. The appliance will be operational as soon as it is connected to a properly earthed socket.

The alarm will sound when the appliance is switched on for the first time and when the appliance is warm. Press the "Alarm" button to switch it off.

The temperature display will also flash.

- **To switch the appliance off:** Press the "ON / OFF" button until the temperature display goes out.
- **To switch the appliance on:** Press the "ON / OFF" button until the temperature display lights up.

Loading

The enclosed plan gives you various options for loading your wine storage refrigerator. NB: the appliance is fitted with flexible grid shelves which may sag slightly when fully loaded. However this will not affect the safety of your stored wines.

Setting the temperature

The appliance is pre-set for normal operation (12 °C).

- **To reduce the temperature:**
Press the bottom button ▼
- **To increase the temperature:**
Press the top button ▲
- While you are entering the temperature, the set temperature will flash on the display.
- You can change the settings in increments of 1°C briefly pressing the button again. If the buttons are held down the temperature setting will change faster.
- The electronic controls will switch over automatically about 5 seconds after the last time you pressed the button, and the actual temperature will be displayed.
- The temperature can be set at between +5 °C and +22 °C.



If "F1" or "FU" appears in the display, the appliance has a fault.

Consult your nearest customer service point, quoting the **type of appliance, index and service number**.

Display brightness: You can change the brightness if required.

- **To make the display brighter:** Keep the audible warning button pressed and press button ▲ simultaneously.
- **To make the display darker:** Keep the audible warning button pressed and press button ▼ simultaneously.

Audible warning signal

The audible warning signal helps to protect your wines against excessive temperature fluctuations.

- It sounds when the door has been left open for longer than about 180 seconds. The audible warning device is switched off by pressing the "**ALARM**" button.
- It sounds when the interior gets too warm or too cold. The temperature display will also flash. The audible warning device is switched off by pressing the "**ALARM**" button. The temperature display will continue to flash until the cause of the alarm has been rectified.

Child-proof lock

GB

The child-proof lock is designed to protect the appliance from being switched off and the temperature setting from being changed accidentally by children.

Switching on the child-proof lock:

Hold down the  button for approx. 2 seconds.

- A double beep confirms your entry.

- The LED  will come on.

Switching off the child-proof lock:

Press this key again; the LED  will now go out.

Storing wine

If you are storing wine for long periods of time, it should be stored at a temperature of between 10°C and 14°C. This is the temperature wine cellars are kept at, and it is just right to allow wine to mature properly.

Try to store bottles of the same sort of wine next to each other on the same shelf so as to avoid having to move other bottles to access the bottles you want to remove, as wine should not be moved during storage if at all possible.

Air exchange with activated carbon filter

The way in which wines continue to mature depends on the ambient conditions. The quality of the air is therefore decisive for preserving the wine. An activated carbon filter has been fitted in the lower area of the rear wall of the appliance to ensure that the air throughput remains at an optimum quality.

We recommend that you replace the filter once a year. Filters can be obtained from your dealer.

Changing the filter: Take the filter by the handle. Turn it 90° to the left or right and remove.

Inserting the filter: Insert with the handle in a vertical position. Turn it 90° to the left or right until it clicks into place.



Labels

(depending on equipment)



fig. A



fig. B

The appliance is supplied with a label holder with labels for each shelf. Use these to label the type of wine stored on each shelf. Use a soft pencil on the labels so that you can erase it again when necessary.

Additional labels (with holders if required) can be obtained from your dealer.

- **Installation:**

- Snap the label holder into position (fig. A) and insert the label from the top.

- **Fitting onto wooden shelves:**

- Insert the labels from above as illustrated in fig. B.

Defrosting

The appliance defrosts automatically. The water that forms on the rear wall drains into a reservoir at the back of the appliance and evaporates automatically through the compressor heat. Make sure that the defrost water can flow freely through the drain opening (see "Cleaning").

Cleaning



Before cleaning always switch off the appliance.

Pull out the mains plug or remove/unscrew the fuse.

- Clean the inside, equipment parts and outer walls with lukewarm water and a little detergent.

Do not use steam cleaners because of the risk of injury and damage.

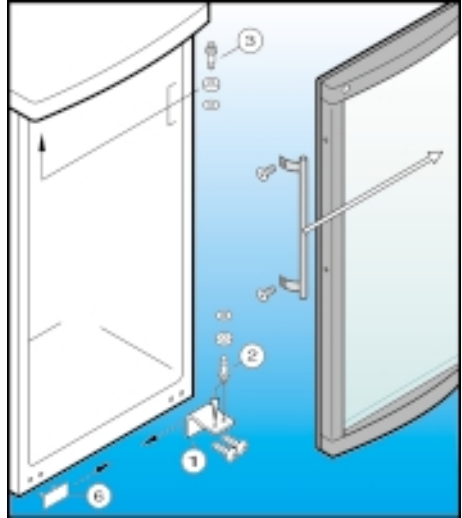
Never use abrasive or acidic cleaning agents or chemical solvents. We recommend the use of an all-purpose cleaner with neutral pH.

- Ensure that no cleaning water penetrates into the electrical components.
- Dry all parts well with a cloth.
- Clean the drain hole in the refrigerator compartment with a thin object, e.g. cotton swab or the like.
- Do not remove the type plate from the inside of the appliance; it is important for after-sales servicing.

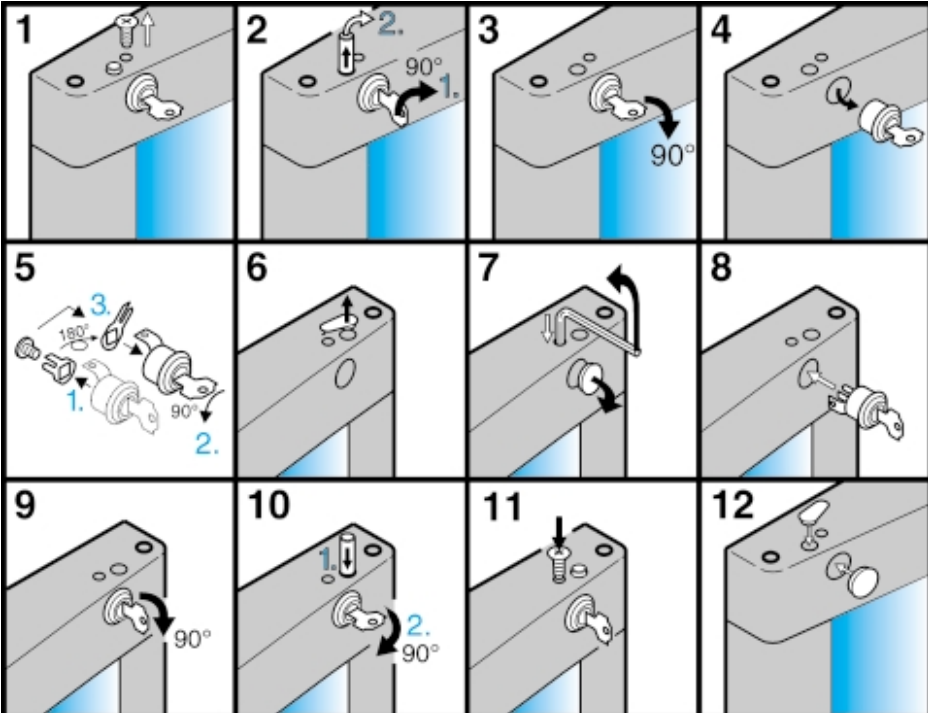
Changing over door hinges

GB

- Close the door and unscrew the hinge bracket • .
- Pull the door out at the bottom and lift off.
- Unscrew the hinge pin *f* , from the hinge bracket • and screw into the adjacent retaining hole.
- Unscrew hinge pin *f* and screw in on opposite side.
- Transfer door handle and plugs to the other side.
- Lift off the cover † and seal the exposed retaining holes on the other side with it.
- Mount door on hinge pin *f* and close.
- Insert hinge bracket • in lower door mounting and screw onto plinth.



Replacing the door lock



Safety instructions and warnings

- To prevent injury or damage to the unit, the appliance should be unpacked and set up by two people.
- In the event that the appliance is damaged on delivery, contact the supplier immediately before connecting to the mains.
- To guarantee safe operation, ensure that the appliance is set up and connected as described in these operating instructions.
- Disconnect the appliance from the mains if any fault occurs. Pull out the plug, switch off or remove the fuse.
- When disconnecting the appliance, pull on the plug, not on the cable.
- **Any repairs and work on the appliance should only be carried out by the customer service department, as unauthorised work could prove highly dangerous for the user. The same applies to changing the mains power cable.**
- Do not stand on the plinth, drawers or doors or use them to support anything else.
- Do not let children play with the appliance, e.g. do not allow them to sit in the drawers or swing on the doors.
- **If you have a lockable appliance, do not keep the key near the appliance or within reach of children.**
- Do not use electrical appliances inside the appliance.

Shutting your appliance down

If your appliance is to be shut down for any length of time, switch it off and disconnect the plug or remove the fuse. Clean the appliance and leave the door open in order to prevent unpleasant smells.

Environmental protection and disposal notes

The packaging is designed to protect the appliance and individual components during transport and is made of recyclable materials.

- corrugated cardboard/cardboard (predominantly recycled paper)
- moulded polystyrene (foamed, CFC-free polystyrene)
- polyethylene bags and sheets
- polypropylene straps
- Please return the packaging material to the nearest official collection point so that the various materials can be recycled or reused as far as possible and so as to avoid throwing them away.

Old appliances still contain reusable materials and should not be disposed of with household or bulk refuse.

- Disable discarded appliances immediately by removing the plug and cutting through the connection cable.
- **Remove the spring-action or bolt catch from the appliance or render it unusable so that children cannot become trapped inside and suffocate.**
- Ensure that the refrigerant circuit and in particular the heat exchanger on the rear of the appliance is not damaged before the appliance that is no longer needed is taken away for disposal. In this way the refrigerant will not escape into the environment.
- Information concerning the refrigerant and insulating materials used can be found on the type plate.
- Information on collection dates or collection points can be obtained from the waste disposal authorities or local council.

General information

The refrigerant circuit has been tested for leaks.

The appliance is radio-suppressed to EN 55014 and thus complies with EC Directive 87/308/EEC.

All types and models are subject to continuous improvement and the manufacturer therefore reserves the right to make modifications to the shape, equipment and technology.

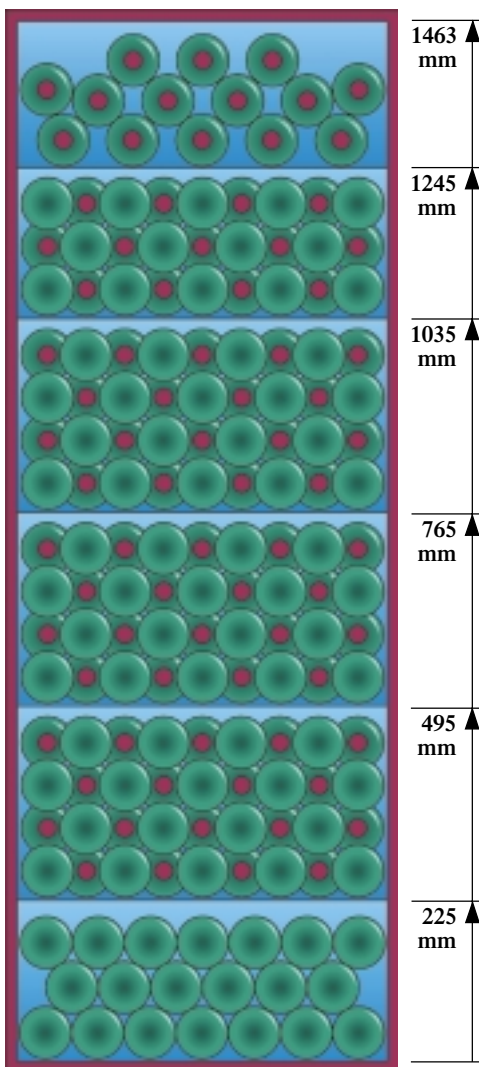
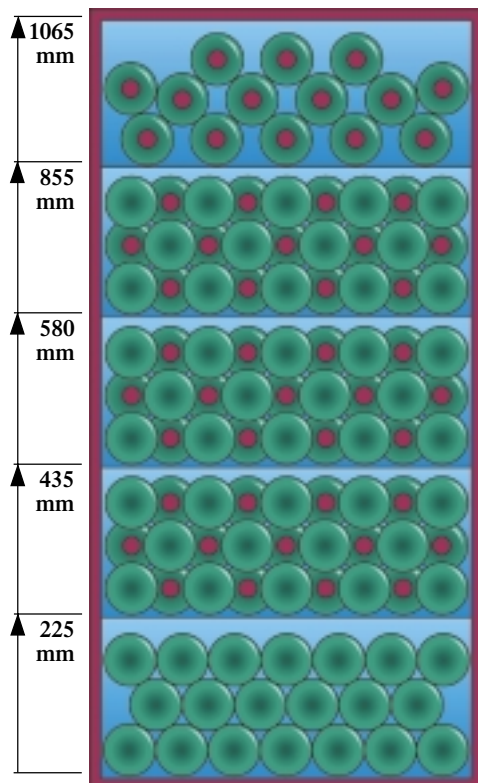
Storage diagrams

for 750 ml Bordeaux bottles

The loading pattern illustrated is only an example:
the appliance can be loaded with
different quantities depending on
how the shelves are arranged.

41 series
Total: 169 bottles

29 series
Total: 115 bottles



46 series
Total: 196 bottles

